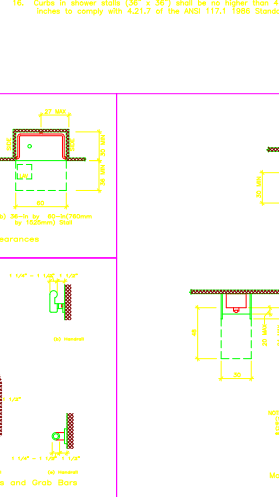
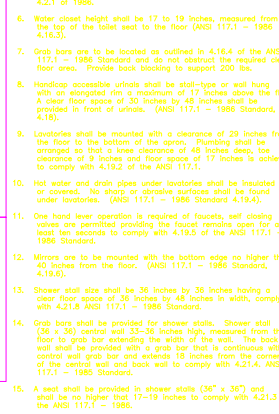
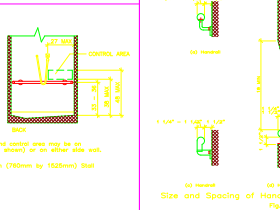
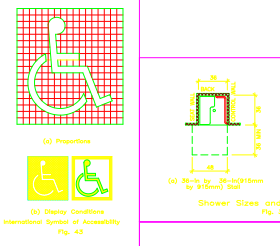
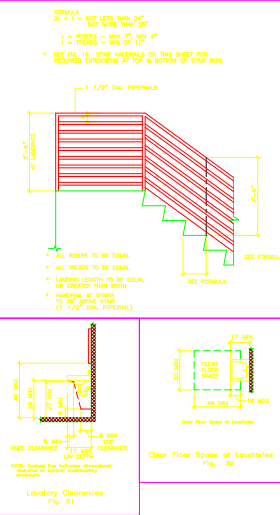
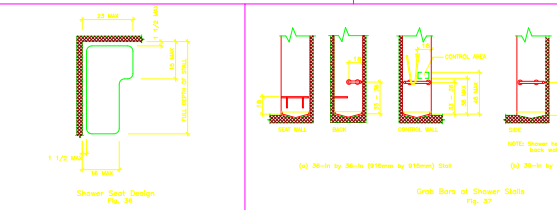
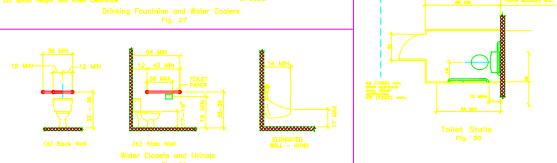
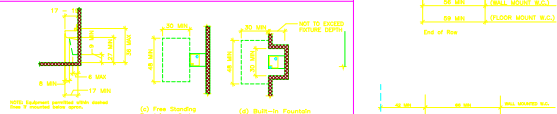
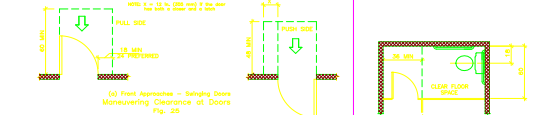
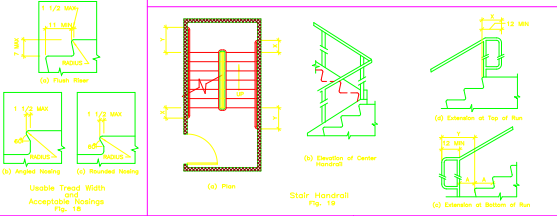
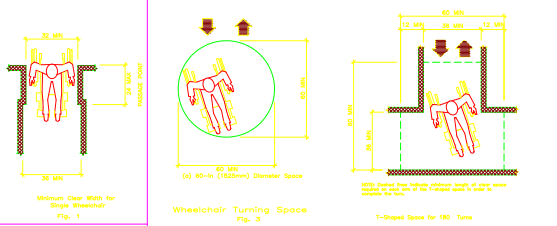


# GENERAL NOTES AND ADA STANDARDS

- All exit doors and doors in the means of egress shall be side hinges and if any locking or latching device is to be provided, only approved devices shall be used.
- The floor on both sides of a door shall be level and shall have the same elevation on both sides of the door for a distance on each side at least equal to the width of the widest single door.
- Doors in exits shall not be subject to the use of a key for operation from the inside of the building.
- Every floor inside and outside every building shall be provided with handicap ramps (levels, pades, horizontal, or L-shaped designed devices, etc.).
- Minimum clear width for handicap passage is 32 inches at a point-free doorway and 36 inches continuously to comply with 4.2.1 of 1996.
- Water closet height shall be 17 to 19 inches, measured from the top of the toilet seat to the floor (ANSI 117.1 - 1986 4.16.3).
- Grab bars are to be located as outlined in 4.16.4 of the ANSI 117.1 - 1986 Standard and do not obstruct the required clear floor area. Provide back support to support 200 lbs.
- Handicap accessible urinals shall be stall-type or wall hung with an elongated rim a maximum of 17 inches above the floor. A clear floor space of 30 inches by 48 inches shall be provided in front of urinals. (ANSI 117.1 - 1986 Standard, 4.16)
- Lavatories shall be mounted with a clearance of 29 inches from the floor to the bottom of the open. Plumbing shall be arranged so that a knee clearance of 48 inches deep, toe clearance of 9 inches and floor space of 17 inches is achieved to comply with 4.16.2 of the ANSI 117.1.
- Hot water and drain pipes under lavatories shall be insulated or covered. No sharp or abrasive surfaces shall be found under lavatories. (ANSI 117.1 - 1986 Standard 4.16.4).
- One hand lever operation is required of faucets, self closing valves are permitted providing the faucet remains open for at least ten seconds to comply with 4.19.5 of the ANSI 117.1 - 1986 Standard.
- Mirrors are to be mounted with the bottom edge no higher than 40 inches from the floor. (ANSI 117.1 - 1986 Standard, 4.19.6).
- Shower stall size shall be 36 inches by 36 inches having a clear floor space of 30 inches by 48 inches in width, comply with 4.21.8 ANSI 117.1 - 1986 Standard.
- Grab bars shall be provided for shower stalls. Shower stall (36" x 36") control wall 35-36 inches high, measured from the floor to grab bar extending the width of the wall. The back wall shall be provided with a grab bar that is continuous with the central wall and back wall to comply with 4.21.4, ANSI 117.1 - 1986 Standard.
- A seat shall be provided in shower stalls (36" x 36") and shall be no higher than 17-19 inches to comply with 4.21.3 of the ANSI 117.1 - 1986.
- Curtains in shower stalls (36" x 36") shall be no higher than 4 inches to comply with 4.21.7 of the ANSI 117.1 1986 Standard.
- If drinking fountains are provided, at least one shall be provided for every floor which is most accessible and usable by the handicapped persons. (4.21.7)
- Free-standing or built-in drinking fountains or water coolers shall have a clear floor space of at least 30 inches by 48 inches to comply with 4.19.5 (2) of the ANSI 117.1 - 1986 Standard.
- Doors to accessible toilet rooms shall not swing into the clear floor space required for any fixture. (4.22.2 ANSI 117.1 - 1986 Standard)
- Handicap accessible restrooms shall have an unobstructed clear floor space of 5' diameter circular area or 11' square space for maneuvering 180 degrees all sides, measuring 2' wide. The perpendicular clear being 5' long lateral aisles extending 1' either side of the 2' wide.
- At least one toilet room shall be provided for every floor which is to be made accessible and usable by handicapped persons. (4.8, 4.9)
- Public lavatories require a clear floor or ground space of at least 30" x 48" to allow forward or parallel approach. Boxes, enclosures, and fixed seats shall not impede approaches to telephones by people who use wheelchairs. (4.22.2 ANSI 117.1 - 1986)
- Telephone heights shall comply with 4.25.5 and 4.25.6. Donorally mounted telephones shall have the highest operable top no higher than 54 inches above the floor (4.29.3 ANSI 117.1 - 1986).
- Telephone shall be equipped so as to comply with ANSI 117.1 - 1986 Standard 4.29.5).
- Seats, tables, and work surfaces shall comply with 4.8, 4.9 and 4.30 of the ANSI 117.1 - 1986 Standard.
- Contact this office when approximately 80% complete for a preliminary inspection and again when 100% complete for a final inspection to receive your Certificate of Occupancy/Operating Permit.
- The international symbol of accessibility shall be used to identify accessible facilities (4.29.5 ANSI 117.1 - 1986).
- Handrails shall be provided at both sides of all stairs. Handrails shall comply with 4.8 and shall have the features outlined in 4.8.5 of the ANSI 117.1 - 1985 Standard. (34" Height).
- Doorways having two door leaves, one leaf shall have a minimum clear opening of 32 inches with the door open 90 degrees and maintain the required maneuvering clearances at doors. (ANSI 117.1 - 1986 Standard 4.15.5 E).
- Minimum maneuvering clearances for non-automatic doors requires a clear space of 18" on the latch side of a pull side doorway, having a perpendicular distance of 5 ft. from the doorway being clear space to comply with 4.15.5 of the ANSI 117.1 - 1986 Standard.
- The floor on both sides of a door shall be level and shall have the same elevation on both sides of the door for a distance on each side at least equal to the width of the widest single door.
- Provide sturdy handrails on both sides of any steps three or more risers in height (34" handrail).



Approved For Construction

1525 CLIFTON  
 EMORY UNIVERSITY  
 ATLANTA, GEORGIA

SEEMORE FLOYD ARCHITECTS, INC.

ADA STANDARD

A0.03